



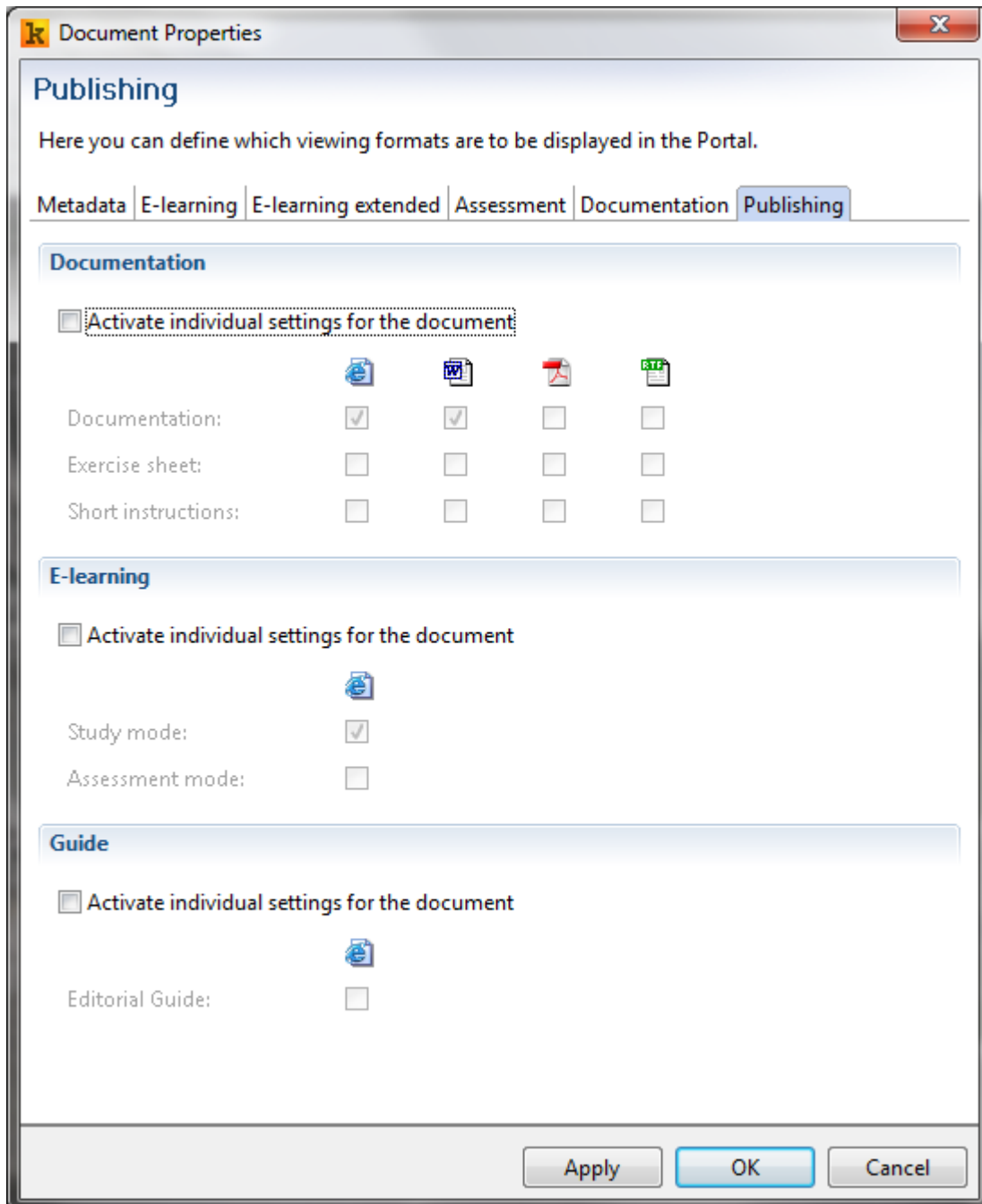
LMS package

This documentation shows how you can export a Producer document in the form of an LMS package and why that can be good.

It's also possible to export a single Producer document in addition to the WBT export. The LMS package can be used to import a Producer document into a Learning Management System (LMS). But it also offers other forms of export that can be used in different contexts. The LMS package contains:

- AICC and SCORM data for importing the document into an LMS
- Additional start links for accessing the AICC or SCORM versions directly: `start_xx_aicc`: starts the e-learning with the AICC interface
`start_xx_scorm`: starts the e-learning with the SCORM interface
- A browser-compatible version of the document (`start_xyz.html`). The following codes apply to this:
 - `start_lm`: starts the Study mode of the e-learning
 - `start_am`: starts the Assessment mode of the e-learning
 - `start_xx_documentation`: starts the HTML documentation
 - `start_xx_guidance`: starts the Guide viewThis version should be used when you want to make the lesson available in your intranet, for example.
- If the Word, PDF or RTF exports are specified in the document's export options, they will also be exported.

The settings regarding which exports are to be stored in the LMS package can be found in the document properties:



If the **Activate individual settings for the document** option is not selected, the default export options will apply. These are marked with a bright gray checkmark.