

Designing an e-learning

Webinar session on tts performance suite





Agenda

1 Interaction in tts performance suite

- Anykey
- Adapting existing interactions and adding new ones
- Jumps

2 Animations and Triggers

3 Assessment in tts performance suite

- General hints
- Creating Test question steps
- Assessment result

4 Outlook



Online Tutorial

Interaction






Some remarks on the „Anykey“

By default, any step that does not require the user to carry out a certain interaction can be left by pressing any key on the keyboard or clicking anywhere / swiping.

Simulation steps without an interaction are referred to as „Anykey“ in the step list.

If you would like to keep users from leaving an interactive step by accident (e. g. if he/she clicks a certain object that triggers additional information, but that very click would also call the next step,) you can avail of the „Proceed only via next button“ option in the step properties.

Adapting interactions / adding new ones to simulations

Type	Interaction
Main interaction	 Click station/stop/address
Interaction	 Key Tab 



additional information

By inserting a jump, you can allow the end user to access any other step in the e-learning directly by simply interacting with (e. g. clicking) an object.



Animations and Triggers

Animations and triggers

- Animations allow you to e. g. move objects on a page.
- There are two types of animations that are treated separately: Entrance and Exit animation, which are each maintained in their own list. Entrance refers to the moment a step is accessed. Exit refers to the moment a step is left to call the next step. In that case, prior to displaying the next step, the Exit animations will be played back.
- Triggers allow you to specify criteria that must be met so an Animation (-> Animation trigger) or a certain function of the tutorial control (-> Control trigger) is called.
- Triggers may be induced by, for example:
Clicking, drag&drop, a certain feedback
(shown in the simulation if a „wrong“
interaction is carried out)



additional
information

Assessment



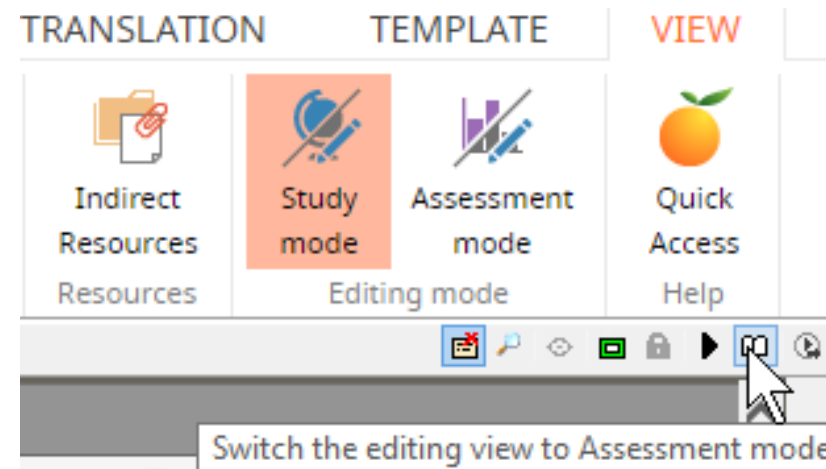
Some remarks on *Study mode vs. Assessment mode*

- The Study mode (LM, "Lernmodus") and the Assessment mode (AM) are two export formats for e-learnings. The former is aimed at letting users work their way through an e-learning at their own pace and learning along the way, whereas the latter is aimed at providing a learning success monitoring.
- For this reason, the AM provides less hints (by default) compared to the LM (e. g. comments during the simulation).
- You can control whether a step is available exclusively in one of the two modes, or in both, via the step properties.

Study mode vs. Assessment mode II

You can toggle the editing view between the two modes:

Either via the „View“ tab, or using the tiny “Book” button above the stage.



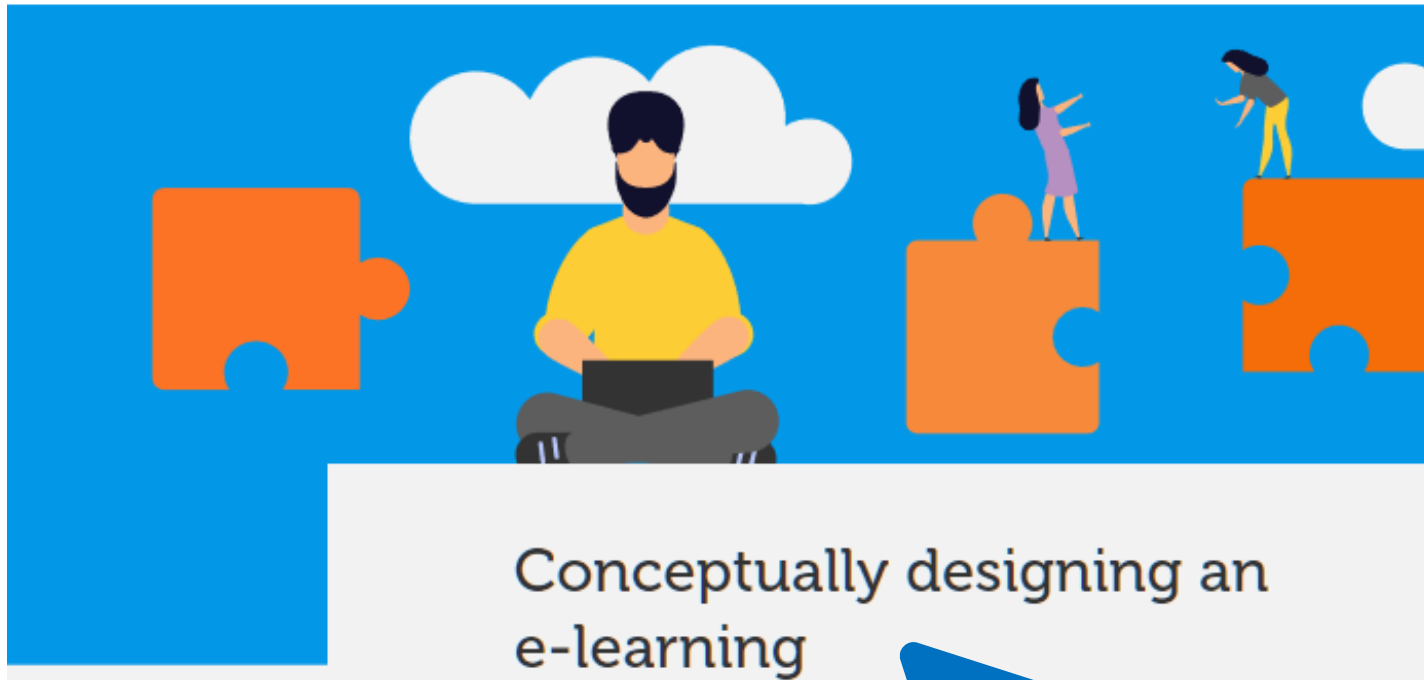
Outlook



Outlook

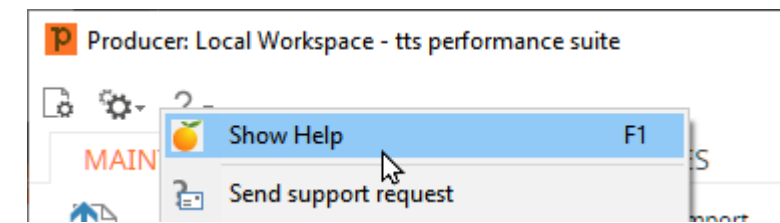
- The next session will be very interesting to you if you intend to enhance your e-learnings and assessments even further: SmartComponents
- Test questions can also be built using SmartComponents.
- As for the output format E-Learning, tts performance suite can produce content that is either compatible with the classic HTML standard (HTML4), or with the newer HTML5 standard (can be set in the document properties). For a more in-depth presentation of the advantages and caveats of using HTML5, please see our [authoring guideline](#).

Where do I find more information



... and help?

QuickAccess inside tts performance suite (F1)



Online help portal

[Online Help](#)

Facing technical problems?

support@tt-s.com