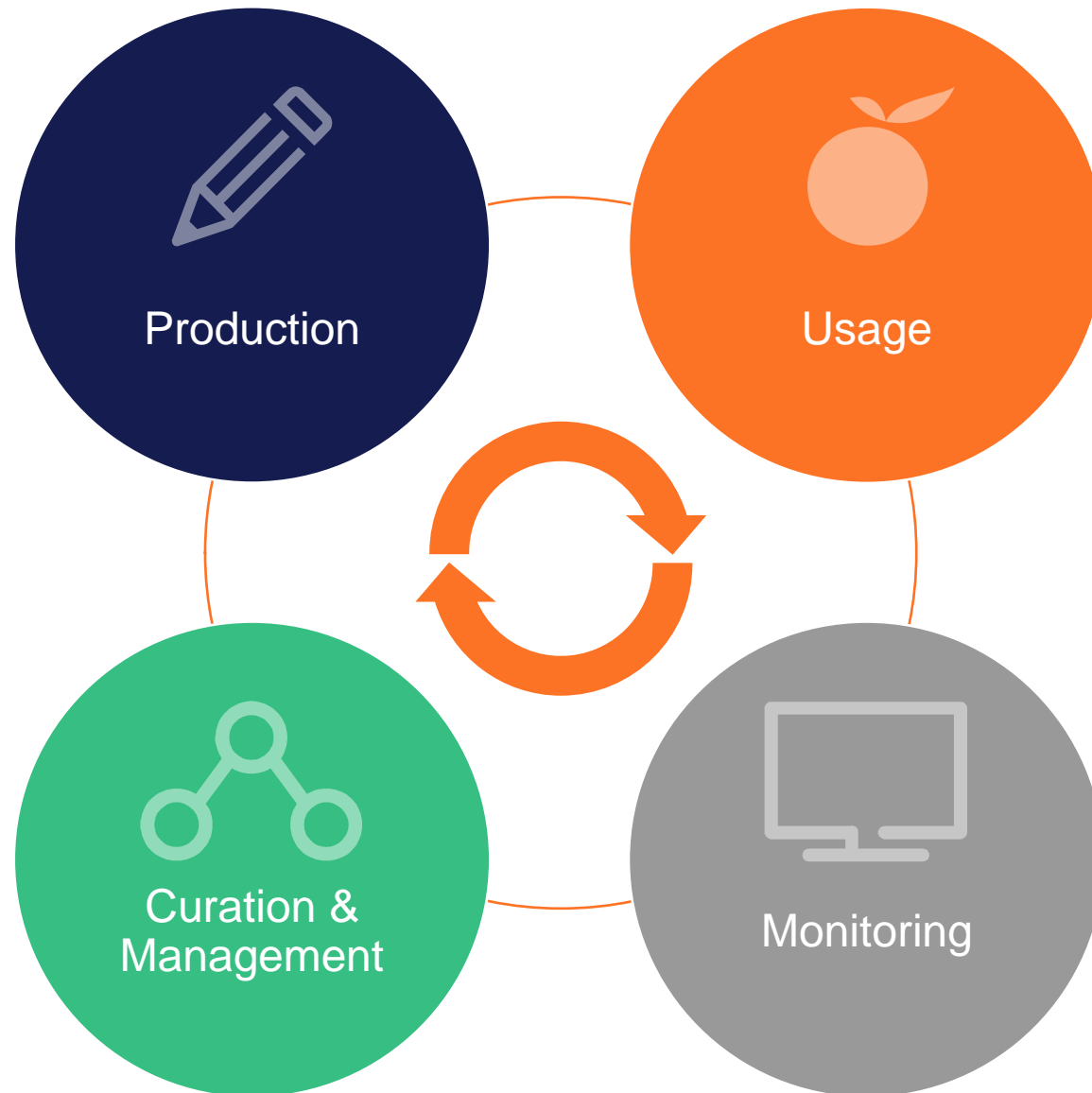




tts performance suite 2024

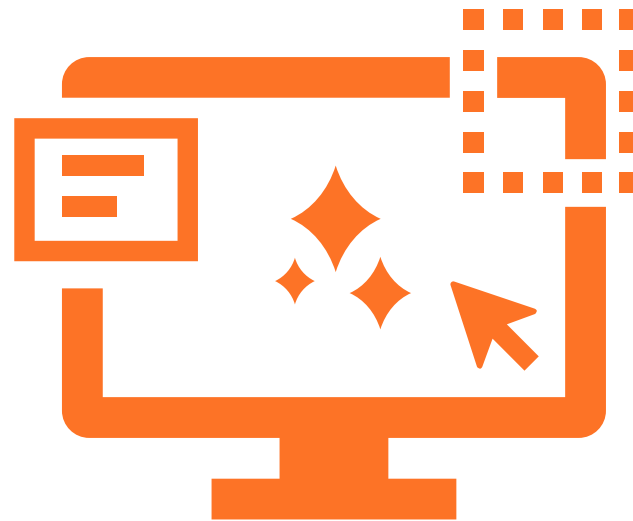


Creator - Optimization of the user interface



Creator - Optimization of the user interface

- Drag & drop steps within step lists
- Add new steps more easily
- Revised interface design



Creator - AI-generated images with DALL-E



Creator - AI-generated images with DALL-E

- Simply add decorative and illustrative images to content
- Predefined prompts for different styles



Creator - AI-generated images with Dreamstudio



Creator - AI-generated images with Dreamstudio

- Alternative for creating decorative and illustrative images
- Predefined prompts for different styles
- Various image formats



Creator - AI-assisted creation of metadata



Creator - AI-assisted creation of metadata

- Generate keywords and descriptions for step lists at the touch of a button
- Makes content easier to find

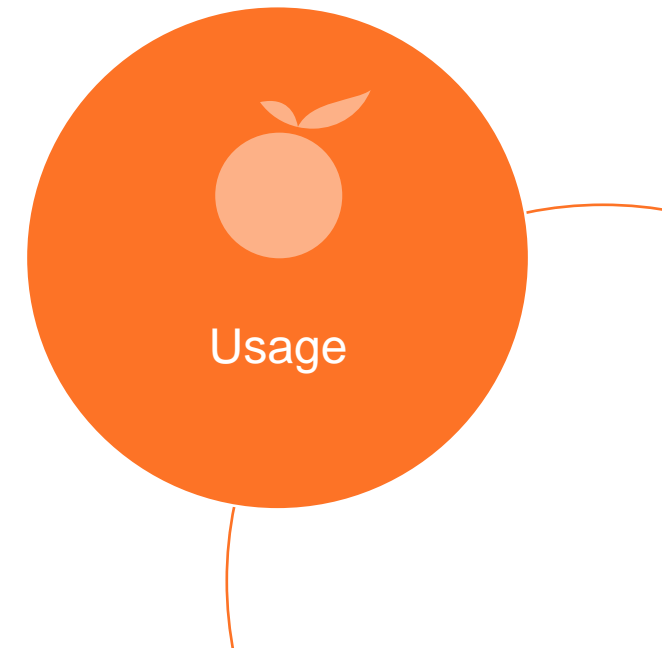


WebAccess - display content directly in the process and topic view



WebAccess - display content directly in the process and topic view

- Harmonization of the presentation of topics and processes in WebAccess and QuickAccess
- Preview option from the Curator



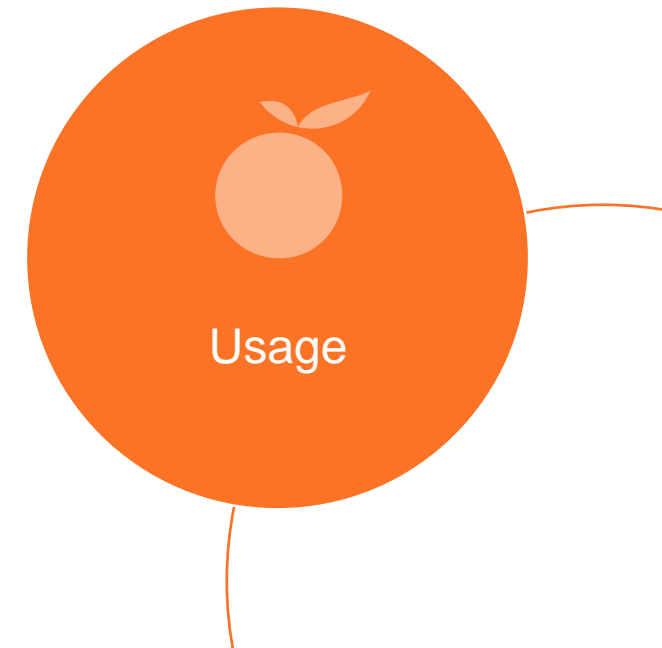
QuickAccess/WebAccess - Define display type of subtopics



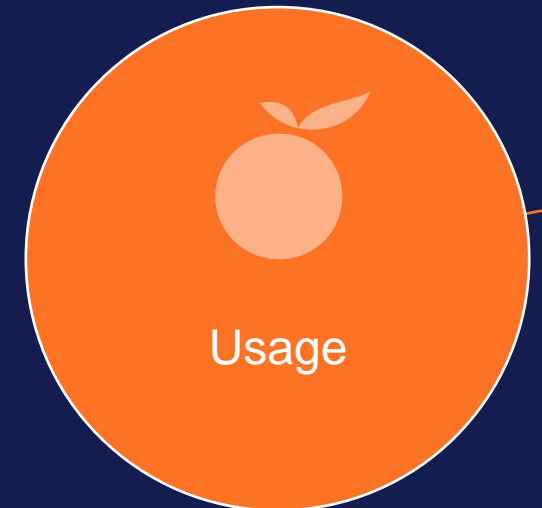
Usage

QuickAccess/WebAccess - Define display type of subtopics

- Present subsequent topics / process steps following explanatory content
- Simple replacement of the standard display with ImageMaps

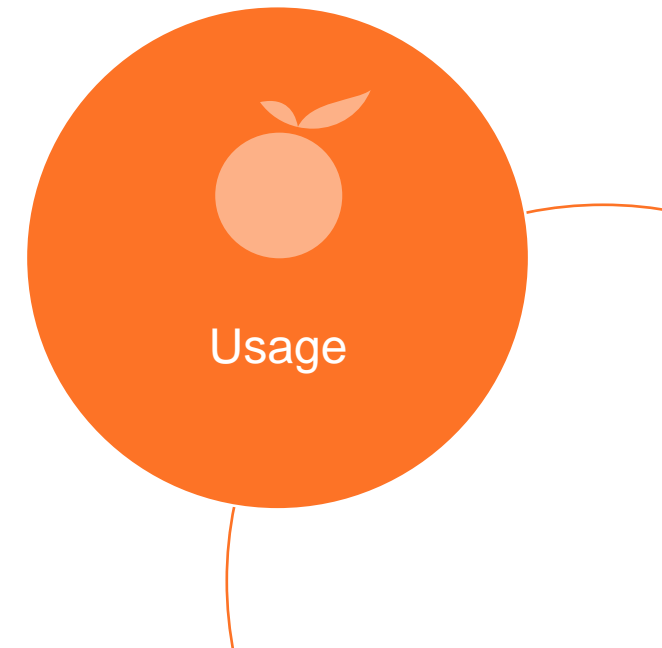
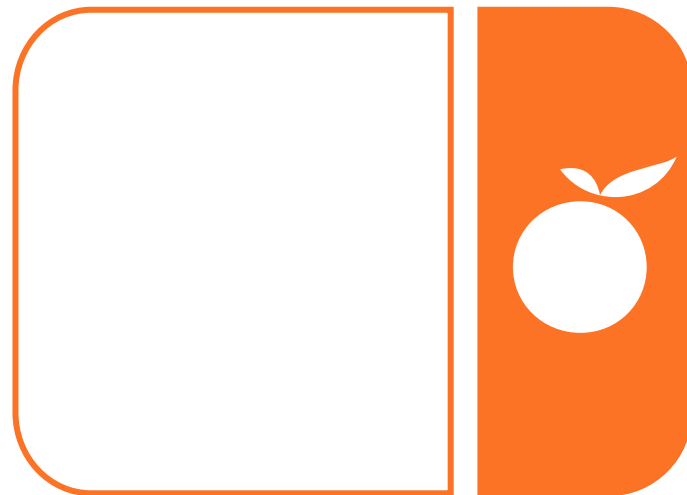


QuickAccess – simplified docking



QuickAccess – simplified docking

- Visual feedback when QuickAccess is in the docking area
- Keyboard control for different window sizes



Producer - Text to speech with Amazon Polly

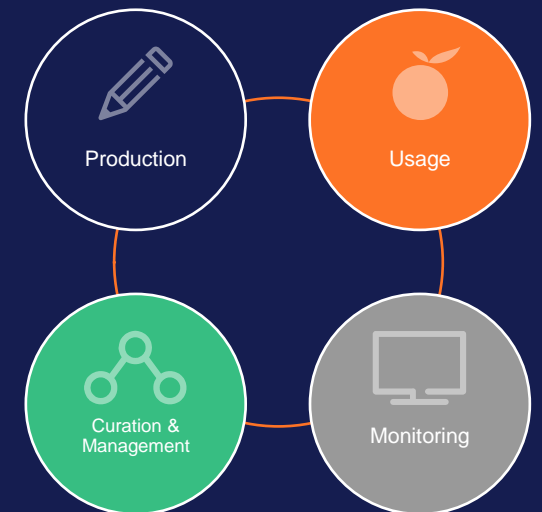


Producer - Text to speech with Amazon Polly

- Polly as an additional text to speech provider
- Enables the use of neural voices

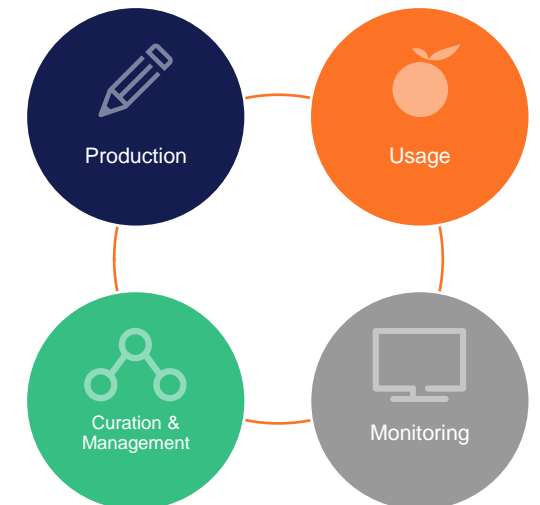


Miscellaneous



Miscellaneous

- Tooltips, shortcuts and improved keyboard control in ImageMaps
- Batch republish of Creator documents
- Log of administrative changes to user profiles
- SAML users can now also be maintained via the user interface
- Configurable URLs for access to OpenAI services
 - Enables connection with customer-specific Azure AI instances, for example



Questions?





Thank you

tts GmbH
Schneidmühlstr. 19 | 69115 Heidelberg

tt-s.com

