

tts performance suite

What's New in Release 2024





Table of content

| | |
|---|----------|
| tts performance suite 2024 | 3 |
| 1 Content usage | 4 |
| 1.1 Adapted presentation of topics and processes in WebAccess..... | 4 |
| 1.2 Define display type of subtopics and -processes..... | 4 |
| 1.3 QuickAccess - Simplified docking..... | 5 |
| 2 Creation of content..... | 5 |
| 2.1 Creator - Optimized user interface..... | 5 |
| 2.2 Generate images using AI | 5 |
| 2.3 Create AI-supported metadata for step-by-step instructions | 6 |
| 2.4 Making ImageMaps accessible | 6 |
| 2.5 Create speaker sounds for e-Learning content with Amazon Polly | 7 |
| 3 Curation of content..... | 7 |
| 3.1 Batch republish of Creator documents..... | 7 |
| 4 Miscellaneous | 7 |
| 4.1 Configurable URLs for OpenAI service access | 7 |
| 4.2 SAML users now also administrable via the interface..... | 7 |
| 4.3 Log of administrative changes to user profiles..... | 7 |
| 5 End-of-life announcements | 7 |
| 5.1 Chromium Embedded Framework (CEF) im QuickAccess | 8 |

tts performance suite 2024

Version 2024 of the tts performance suite makes it even easier to support users in the implementation of processes, rules and procedures. As the content created with the Creator can now also be displayed directly in the process and topic view in WebAccess, users can now find the information they need in an appealing form, regardless of the access method.

The ongoing development of artificial intelligence is once again taken into account in version 2024 of the tts performance suite. In addition to the ability to create images via various text-to-image services simply by entering text, AI services also support the creation of keywords and descriptions of step lists or the creation of a speaker sounds for learning content on demand.

In addition, the customizable display of subtopics and processes now enables more targeted routing to further content and simplifies the creation of decision trees, thus also contributing to an even more efficient creation and even easier use of your process and topic displays.

Numerous improvements and optimizations round off the release. Below you will find an overview of all new features.

1 Content usage

1.1 Adapted presentation of topics and processes in WebAccess

Since version 2023 of the tts performance suite, it has been possible to design processes with embedded content for direct display in QuickAccess. With the 2023r2 release, this option was also added for the topic view, so that since then very flexible design options have been available for displaying help directly in the work context.

With tts performance suite 2024, this content is now also displayed directly embedded in the topic and process view in WebAccess, i.e. when accessed via the browser. This makes it possible to design content independently of the specific access method and also make it available in scenarios where QuickAccess is not available.

The display option in WebAccess also provides a simple preview option for embedded content, as the preview functions available in the Curator can now also be used for embedded Creator content.

1.2 Define display type of subtopics and -processes

From tts performance suite 2024, it is possible to specify whether and at what point within a topic or process node subtopics or subprocesses should be displayed.

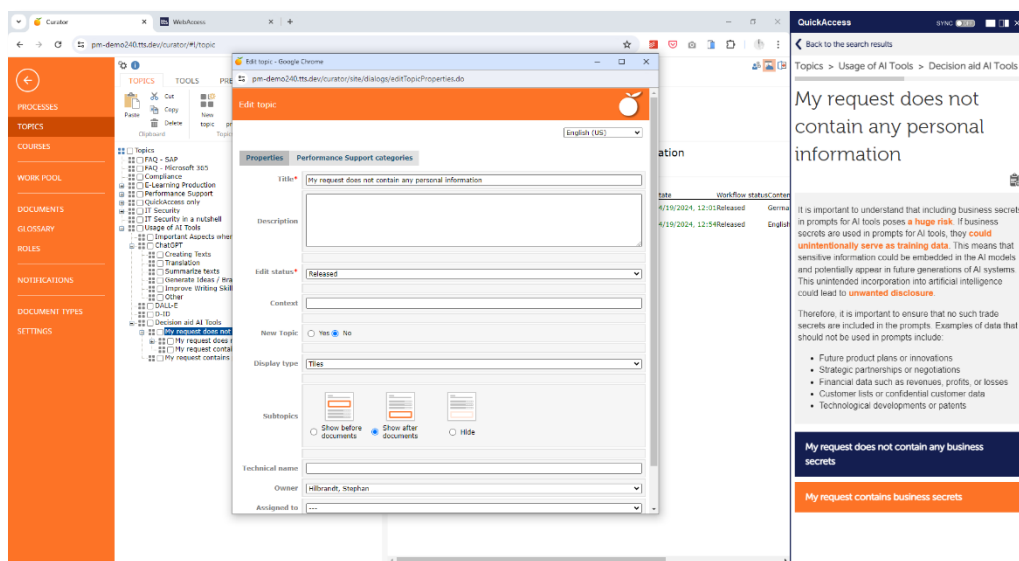


Figure 1: Positioning of subtopics in the Curator and display in QuickAccess

When designing content, for example, this opens up the possibility of first explaining the content of a topic with texts, images, videos or other design options and only then offering a jump to detailed content in the form of more detailed subtopics.

For more complex structures, e.g. highly branched processes, there is also the option of an ImageMap. With tts performance suite 2024, you can easily specify in the properties of the corresponding process step that the standard display of its sub-processes should be hidden and then replace it with your own ImageMap.

1.3 QuickAccess - Simplified docking

Following the improvements to the window behavior of QuickAccess already introduced in version 2023r2, version 2024 adds visual feedback when docking, i.e. when switching from floating to sidebar mode. It is also possible to control the various window sizes using keyboard shortcuts.

2 Creation of content

2.1 Creator - Optimized user interface

Version 2024 of the tts performance suite brings a revised user interface to the Creator. Brighter colors and optimized icons make all templates look fresher and more familiar at the same time.

In the editor for step-by-step instructions, the user guidance has also been revised so that you can now move steps easily and with fewer clicks using drag & drop and it is also easier to create and delete new steps.

2.2 Generate images using AI

2.2.1 DALL-E

Text-to-image services such as DALL-E use artificial intelligence to generate images from text descriptions. With the DALL-E template, it is possible from tts Performance Suite 2024 onwards to generate such images directly from the Creator in order to integrate them directly into process or topic descriptions as decorative or symbol images, for example.

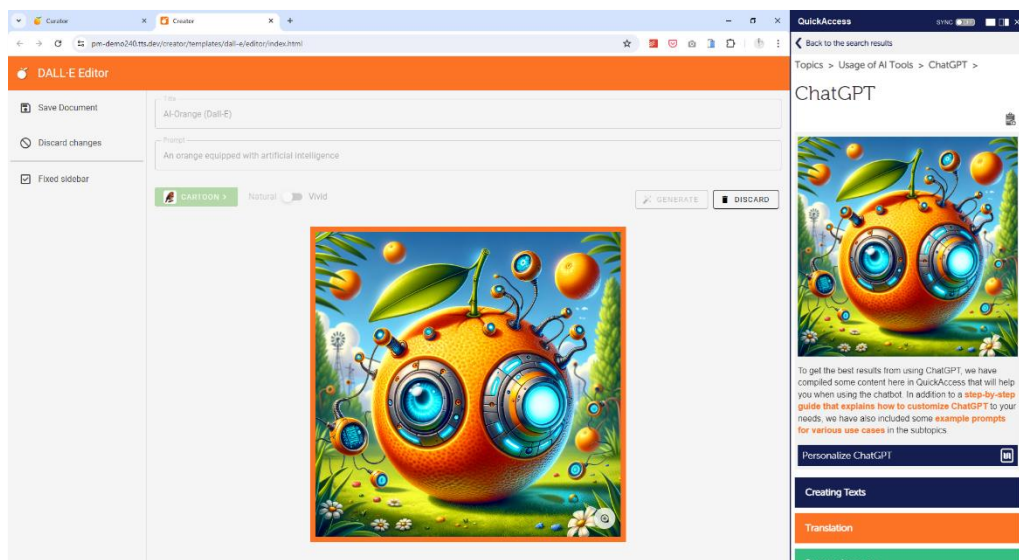


Figure 2: Image creation with DALL-E

As with the previous AI connections, you do not have to deal with complicated prompts, as the Creator supports you with predefined styles when creating images. This allows you to concentrate fully on the description of the desired image and our ready-made image styles ensure that the picture has the desired look.

2.2.2 DreamStudio

In addition to DALL-E, DreamStudio is another text-to-image template that you can use as an alternative or supplement. Predefined image styles also make creation easier when using DreamStudio.

In addition, the DreamStudio template offers the option of selecting the format that is best suited to the desired application from a list of predefined image formats.

2.3 Create AI-supported metadata for step-by-step instructions

Meaningful keywords make it easier for end users to actually find the step-by-step instructions in WebAccess or QuickAccess. The process of selecting such keywords is often not an easy task.

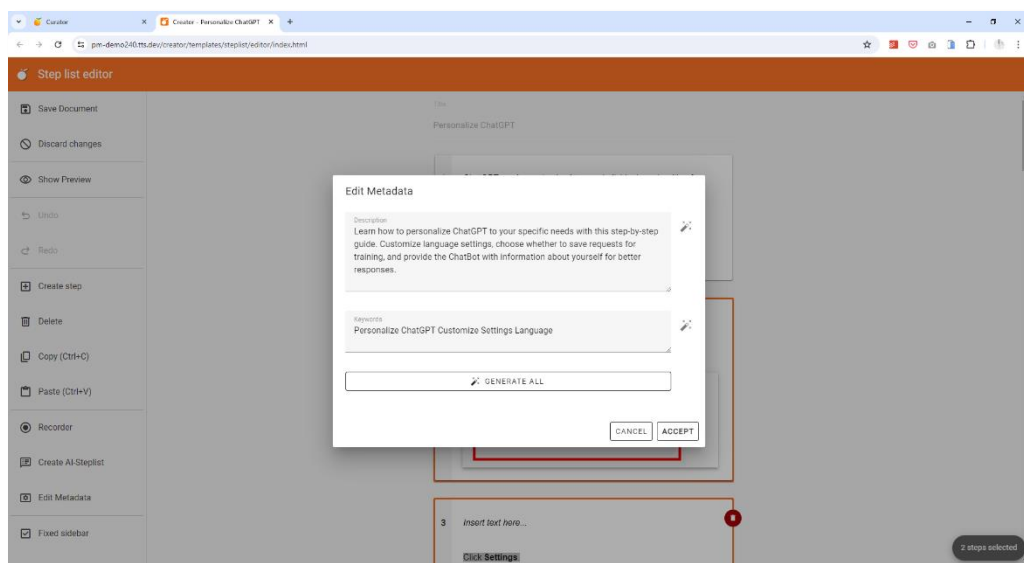


Figure 3: Automatic generation of metadata

To simplify the process of finding keywords, it is now possible to be supported by ChatGPT for step-by-step instructions. The AI receives the text content of the step list and returns suggestions for keywords and a description text at the touch of a button.

Both the description and the keywords can be generated separately or adapted manually if required.

2.4 Making ImageMaps accessible

ImageMaps, which are frequently used to display complex processes, can be made more accessible with version 2024 of the tts performance suite. In addition to the option of providing the individual link areas with tooltips and alternative texts for screen readers, the tab order and individual keyboard shortcuts for the links can also be configured.

2.5 Create speaker sounds for e-Learning content with Amazon Polly

In addition to the text-to-speech providers already supported, Amazon Polly will also be available as an option for providing speaker text in Producer from version 2024 of the tts performance suite.

In addition to standard voices, Polly also offers the use of so-called neural voices. With the help of artificial intelligence, these voices achieve a more natural tone of voice, so that the impression of the voices is even more realistic.

3 Curation of content

3.1 Batch republish of Creator documents

In cases where it is necessary to republish large quantities of Creator documents - e.g. if the form of address in autotexts is changed or adjustments have been made to the content configuration - it is now possible to republish large groups of Creator documents automatically on the server. This makes it possible to update a large number of documents in a short period of time with minimal manual effort.

4 Miscellaneous

4.1 Configurable URLs for OpenAI service access

From version 2024 of the tts performance suite, all AI functions that use OpenAI services can also address OpenAI instances that are kept outside the public cloud instance, e.g. in a company's own Azure AI environment. This is ensured by configurable URLs for accessing these services.

4.2 SAML users now also administrable via the interface

Previously, tts performance suite users connected via SAML could only be created and maintained via an Excel import. This is now also possible via the interface in the Curator settings area.

4.3 Log of administrative changes to user profiles

Changes to user profiles, i.e. the creation, modification or deletion of a tts performance suite user, can now be logged. The time, the user concerned and the user name of the person who carried out the respective action are logged.

5 End-of-life announcements

Occasionally, functions and technical components have to be discontinued in order to create room for something new and to be able to adequately meet future technological requirements.

5.1 Chromium Embedded Framework (CEF) im QuickAccess

Two different embedded browsers are currently available in QuickAccess. The Chromium Embedded Framework (CEF) and WebView2 from Microsoft. Many enterprise functions, such as the connection to an AzureAD, already require the use of WebView2.

From version 2024 of the tts performance suite, the default setting of QuickAccess will therefore be the use of WebView2; CEF would then have to be explicitly configured for use. From version 2024r2, support for the Chromium Embedded Framework will be completely discontinued and only Microsoft WebView2 will be supported.