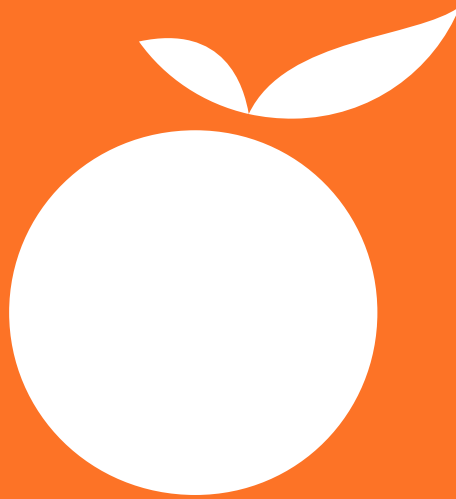


tt performance suite

Product description

tts SmartComponent Library 4.0



.....

RELEASE 2018+

Imprint

Copyright © tts Knowledge Products GmbH. All rights reserved.
Product description - tts SmartComponent Library
5 October 2018 – Version 4.0

Contents

1	What is the tts SmartComponent Library?.....	1
2	SmartComponent API.....	1
3	System requirements of tt performance suite.....	1
4	Maintenance.....	1
5	Third-party libraries.....	2
6	tts SmartComponent Library	3
6.1	What's new.....	3
6.2	tts quiz.....	4
6.3	tts animated objects.....	5
6.4	tts tutorial control	6
6.5	tts games	7
6.6	tts other.....	8
6.7	No longer supported	9

1 What is the tts SmartComponent Library?

Back in 2014, tts decided to introduce the SmartComponent API as an interface for programming new functions in tt knowledge force. This led to the creation of a powerful new instrument that allows a quick and flexible reaction to customer-specific requirements. This made it possible to expand the range of functions in the Document Editor either through the customers' in-house developers or as part of tts customization services – all this regardless of the fixed development cycles at tts.

Furthermore, SmartComponents also have the advantage of simplifying the creation of repetitive and complex interaction designs, while easy-to-use Wizards make it much easier for authors to avail of these functions.

In light of these many advantages, tts has decided to not only make available an API, with which its customers can develop their own SmartComponents, but also to provide a set of standard SmartComponents. Known as the tts SmartComponent Library, tts is responsible for its development and maintenance. The library not only gives tts customers the opportunity to gain an insight into the powerful SmartComponent concept, but also enables them to come up with an even more compelling interaction design and state-of-the-art e-learning content. The following section provides an introduction to the tts standard SmartComponent Library, along with clarifying some basic concepts regarding its maintenance and adaptability.

2 SmartComponent API

The SmartComponent API has to be covered by your tt knowledge force license. The API is included in the 2014 price model.

To avail of the SmartComponent Library, you need to already be using the SmartComponent API Version 2.4. This version is available with Release 2018 of tt knowledge force. The SmartComponent Library cannot be used with earlier versions.

The API is documented [here](#).

3 System requirements of tt performance suite

Please pay attention to the system requirements of your version of tt knowledge force, in particular chapter “2.2 Software” regarding the supported browser versions.

4 Maintenance

The elements in the tts SmartComponent Library are an integral part of tt knowledge force, and are therefore covered by your maintenance contract. If you wish to avail of the advantages of the tts SmartComponent Library, simply import it into your configuration. The SmartComponents

are then distributed to all authors – in the same way as templates – via the configuration. Authors can then use them to help with the creation of content. In the event of an update, the tts SmartComponent Library can simply be reimported.

With a view to ensuring both upgradeability and adaptability, tts has introduced a process which allows its customers to either keep the standard SCs as they are and benefit from updates directly, or to customize them on an individual basis. The appropriate steps are as follows:

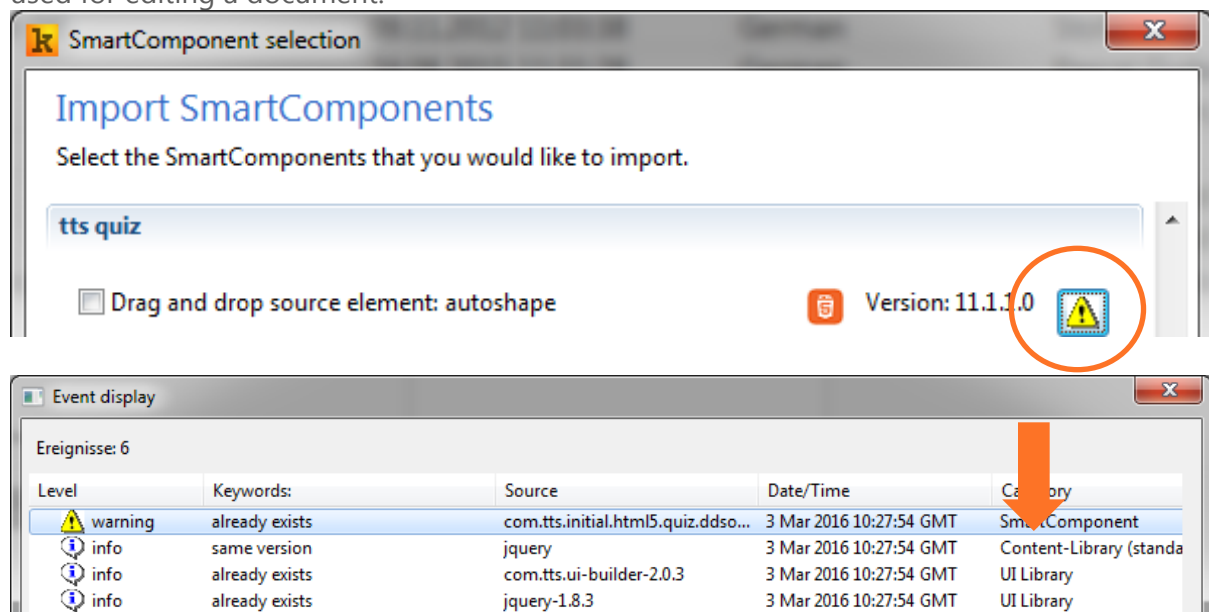
The namespace of the SmartComponent identifies the particular SmartComponent. Namespaces are represented by their notation – such as “com.tts.initial...” – in the file system. Standard tts SCs have the identifier “.tts.” in their name. Whenever the need arises, tts will provide updates for these SCs in upcoming releases.

Please note, that all individual code is overwritten when either the same or an updated version of the SmartComponent is imported. A copy with a new namespace (com.tts.* > com.xyz.*) therefore has to be created whenever a customer wants to change a SmartComponent. This means that changes to the original SmartComponent will no longer overwrite the customer-specific adaptations. Please refer to the documentation on the [SmartComponent API](#) for further information.

Whenever necessary, tts will provide updates for the standard SmartComponents, making them available to all existing customers. In the event of an update, copies of SmartComponents with different namespaces will have to be updated manually. Please note that tts doesn't provide any maintenance services for copies of its standard SmartComponents.

5 Third-party libraries

SmartComponents use third-party libraries. When importing an SC, you can find out more about the library used for the particular SmartComponent. Content libraries and UI libraries are used. Content libraries are used in the product (e-learning), whereas UI libraries are only used for editing a document.



If you import an SC in your ttkf configuration, you implicitly agree to use the particular library.

6 tts SmartComponent Library

Below you will find a comprehensive list of all standard SmartComponents. This list will be constantly updated. tts has done its utmost to ensure that the SmartComponents are both as easy to use and beneficial as possible. All SmartComponents come with a built-in Help function, so authors will be able to get down to the business of producing content right away.

- The SmartComponents in the library support the following user interface languages: DE-DE, EN-US
(in other ttkf interface languages, the SmartComponent UI dialog is displayed in EN-US)

The following settings in your configuration are required:

WYSIWYG view in the authoring environment:

Internet Explorer is used for the WYSIWYG view in the authoring environment. The compatibility mode has to be set if using an embedded Internet Explorer. Your configuration should be used in conjunction with the compatibility mode for IE9.

HTML export:

It's possible to publish documents in the standard tt performance suite player (HTML Player). In this case, the 2014 mode has to be set as the mode for the HTML Player.

HTML5 export:

No settings have to be made in the HTML5 Player.

Click [here](#) to download the tts SmartComponent Library. You can also find further information regarding SmartComponents [here](#).

Should you need further assistance, please don't hesitate to contact the tts Professional Services team.

6.1 What's new

New in the library 4.0 are the following components:

- iFrame
- Lightbox
- Toggle Button
- Play Mode

6.2 tts quiz

Title	Drag and drop source element: autoshape
Description	The drag-and-drop source element can be dragged and dropped over a drag-and-drop target element. The source element then docks with the target element.
Namespace	com.tts.initial.html5.quiz.ddsource.autoform
Notes	
Title	Drag and drop target element: autoshape
Description	A drag-and-drop source element can be dragged and dropped over a drag-and-drop target element. The source element then docks with the target element. You can define whether one or more source elements can be dropped onto the target element.
Namespace	com.tts.initial.html5.quiz.ddtarget.autoform
Notes	
Title	Evaluate button
Description	<p>The Evaluation button is for evaluating the answer to a test question. Depending on the settings for the Question page (see: Test questions - Edit feedbacks), the specified runs are displayed first, followed by the evaluation. It's also possible to switch from the evaluation to the sample solution via this button.</p> <p>The text label on the button exists for the languages DE-DE and EN-US. (The label is displayed in EN-US for all other languages. However, you can use a background image containing text in order to display other languages.)</p>
Namespace	com.tts.initial.html5.quiz.button.evaluation
Notes	
Title	Evaluation: Overall quiz result
Description	This component shows the total test result for the document. You can define its borders, fill and bar color. You can also display a label for the scale.
Namespace	com.tts.initial.html5.quiz.result.overall
Notes	
Title	Evaluation: Result single quiz pages
Description	This component provides a tabular summary of all the results for the test questions in a document. This component is primarily designed for displaying the test result in the Assessment mode, but can also be used in the Study mode.
Namespace	com.tts.initial.html5.quiz.result.detailed
Notes	
Title	Overall quiz result feedback
Description	This component provides feedback on the overall result of the test. The component can be used only on a result page not on

	a question page. The feedback can be given for the two cases "Test passed" and "Test failed".
Namespace	com.tts.initial.html5.quiz.result.feedback
Notes	
Title	Qualified feedback
Description	This component provides a qualified feedback for test questions.
Namespace	com.tts.initial.html5.quiz.feedback.autoform
Notes	
Title	Single Choice / Multiple Choice
Description	This component provides a single-choice or multiple-choice element for a test question. It's possible to assign single-choice elements to groups, so that there is one correct answer for each group.
Namespace	com.tts.initial.html5.quiz.button.choice
Notes	

6.3 tts animated objects

Title	HoverPulse
Description	This component allows you to insert an image that the user can then enlarge. This component scales the entire image when the user touches it with the cursor. When doing so, the enlargement is indicated in pixels. You can also specify the speed at which the animation is to take place.
Namespace	com.tts.initial.html5.animated.hoverpulse
Notes	
Title	Magnifier
Description	This component allows you to insert an image that the user can view more closely with a magnifier. When doing so, the image in the magnifier is displayed in its original size.
Namespace	com.tts.initial.html5.animated.magnifier
Notes	
Title	MenuSlider
Description	Whenever the object is clicked or touched, the MenuSlider moves in the specified direction. All other sliders are returned to their original position. For example, the object can be positioned at the edge of the e-learning window, so that only part of it is visible. If the visible part is clicked, the animation is triggered and the object moves to become fully visible. All other menus simultaneously disappear.
Namespace	com.tts.initial.html5.animated.menuslider
Notes	

Title	Video
Description	This component is for incorporating videos. Videos can be displayed with or without playback control.
Namespace	com.tts.initial.html5.animated.video
Notes	
Title	Zoom
Description	This component allows you to insert an image that the user can then enlarge. This component enlarges the part of the image – to which the user is currently pointing with the cursor – to the original size of the inserted image.
Namespace	com.tts.initial.html5.animated.zoom
Notes	
Title	Moving Picture
Description	This SmartComponent moves the image depending on the mouse position. You specify the maximum horizontal or vertical movement in pixels. The image is then moved depending on the current mouse position.
Namespace	com.tts.initial.html5.movingpicture
Notes	
Title	Lightbox
Description	With the Lightbox SmartComponent you can insert pictures as thumbnails with an automatic magnification effect on-click. The magnified image is superimposed over the learning content with a border area around the image.
Namespace	com.tts.initial.html5.lightbox
Notes	New SmartComponent

6.4 tts tutorial control

Title	Back button (history)
Description	The Back button allows the learner to move back one page at a time, in the same way as when surfing. The Back button is inactive on the very first page to be visited.
Namespace	com.tts.initial.html5.navigation.back.history
Notes	
Title	Back button (step by step)
Description	The Back button allows the learner to move back a page, in the same order as how the pages were originally arranged in the document. The Back button is inactive on the very first page to be visited.
Namespace	com.tts.initial.html5.navigation.back
Notes	
Title	Close button
Description	With the Exit button, the learner terminates the learning unit.
Namespace	com.tts.initial.html5.navigation.close
Notes	

Title	Comment / Feedback
Description	This component displays the global comment and feedback texts for simulation steps and test questions.
Namespace	com.tts.initial.html5.page.comment.and.feedback
Notes	
Title	Next button
Description	The Next button allows the learner to proceed from one page to the next. When on the last page, the Next button closes the e-learning lesson.
Namespace	com.tts.initial.html5.navigation.next
Notes	
Title	Progress
Description	This SmartComponent displays the learning progress as a bar or as a text.
Namespace	com.tts.initial.html5.navigation.progress
Notes	
Title	Repeat button
Description	The Repeat button allows the learner to refresh the current page and restart all animations from the beginning.
Namespace	com.tts.initial.html5.navigation.repeat
Notes	
Title	Sound on - off
Description	This SmartComponent switches the sound on or off.
Namespace	com.tts.initial.html5.sound.onoff
Notes	
Title	Play Mode
Description	With the help of the component Play Mode the user can set the desired play mode when consuming the e-learning content. Created as a simple button with a menu the component presents all available play modes for the current step and the actual selection.
Namespace	com.tts.initial.html5.playmode
Notes	New SmartComponent

6.5 tts games

Title	Memory
Description	This component provides a memory game for up to 20 pairs of images. The success message can be configured.
Namespace	com.tts.initial.html5.games.memory
Notes	

6.6 tts other

Title	Avatar: Ben
Description	This SmartComponent provides a male avatar you can configure the head, arm and hand position as well as the leg posture. Furthermore you can choose a predefined color scheme or set individual colors for several parts of the avatar.
Namespace	com.tts.initial.html5.avatar.ben
Notes	
Title	Avatar: Emma
Description	This SmartComponent provides a female avatar you can configure the head, arm and hand position as well as the leg posture. Furthermore you can choose a predefined color scheme or set individual colors for several parts of the avatar.
Namespace	com.tts.initial.html5.avatar.emma
Notes	
Title	SenderListener - click
Description	This SmartComponent sends the information to the receiver whether the sender component has been clicked. Place the sender component on any page. If the sender is clicked, the receiver is informed.
Namespace	com.tts.initial.html5.sl.click
Notes	
Title	SenderListener - counter
Description	This SmartComponent counts if the sender component was clicked. Place the sender component on any page. If it is clicked, the clicks are counted and transmitted to the receiver.
Namespace	com.tts.initial.html5.sl.counter
Notes	
Title	SenderListener – page visited
Description	This SmartComponent sends the information from the sender to the receiver whether a page has been visited. Place the sender component on any page. If the page is visited, the receiver component is informed.
Namespace	com.tts.initial.html5.sl.counter
Notes	
Title	Toggle button – graphic
Description	With the toggle button component, you can insert a button that remembers its state over several steps. The control triggers "Toggle button Off -> On" and "Toggle button On -> Off" can be used to link any effect with the change of state of the button.
Namespace	com.tts.initial.html5.graphictogglebutton
Notes	New SmartComponent

Title	Toggle button – text
Description	With the toggle button component, you can insert a button that remembers its state over several steps. The control triggers "Toggle button Off -> On" and "Toggle button On -> Off" can be used to link any effect with the change of state of the button.
Namespace	com.tts.initial.html5.texttogglebutton
Notes	New SmartComponent
Title	Toggle button – iFrame
Description	The iFrame component enables the integration of all kinds of external content. Whether videos from streaming platforms such as YouTube or Vimeo, 3D models, maps or similar, any embeddable content can be integrated into your learning objects.
Namespace	com.tts.initial.html5.iframe
Notes	New SmartComponent

6.7 No longer supported

Title	tt feedback (quiz)
Description	This component displays the Feedbacks for a test question. The Feedbacks and their settings can be found in the Document Editor under Test questions - Edit feedbacks.
Namespace	com.tts.initial.html5.page.feedback
Notes	There is a new component for Comment and Feedback (com.tts.initial.html5.page.comment.and.feedback). Therefore this component is no longer supported.