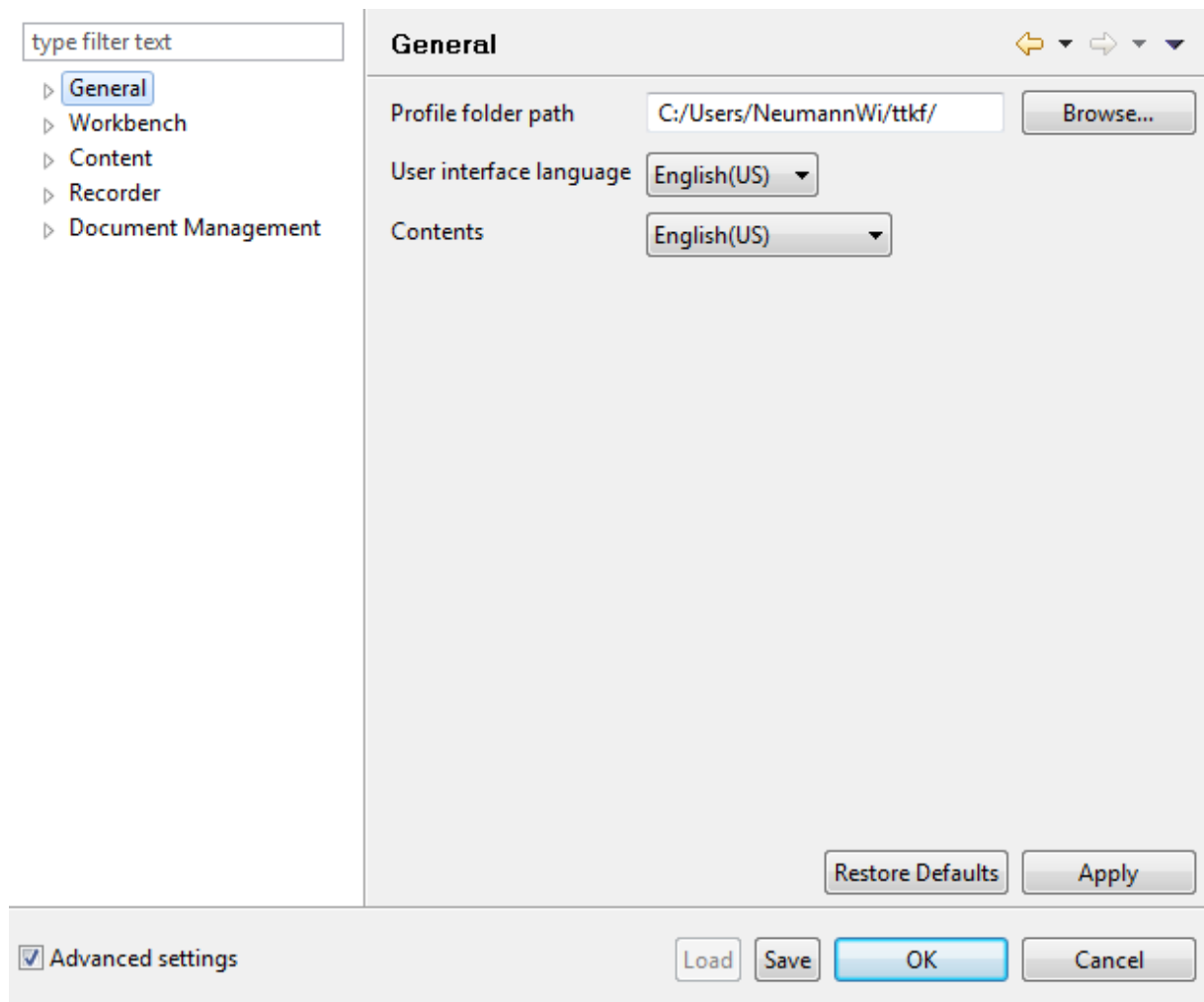


# General user preferences (Producer)


Here you will find general information regarding the User Preferences in which you can specify the basic settings for tts performance suite.



## 1 Basic information

The User Preferences allow you to introduce basic settings regarding the user interface and the various functions of tts performance suite .



The input field at the top left-hand corner of the dialog can be used to search for specific topics. Upon entering the first letter, only those topics that begin with the same letter will be displayed.

The Arrow buttons at the top right-hand corner of the dialog allow you to switch between the topics that have already been opened. This button  will return you to the last topic to have been viewed. Whenever this method is used to return to an earlier topic, you can

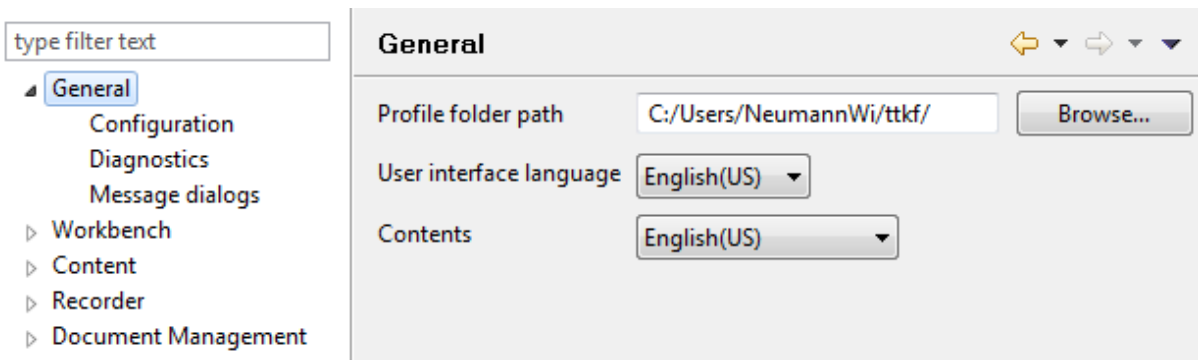
move forward again with this button . The little black triangles  on both Arrow buttons allow you to display a list of topics that can be accessed in the respective direction.

The **Apply** button is for implementing the preference changes you just introduced without closing the User Preferences dialog.

The **Save** button gives you the option of saving the current preferences as a special file in the file system. This file can subsequently be accessed again at any time via the **Load** button. Since this involves overwriting the current User Preferences, this procedure is ideal for ensuring that all project employees are working with the same settings.

To ensure that tts performance suite can be handled in as clear a manner as possible, only the basic settings are displayed initially. The **Advanced settings** checkbox at the bottom left-hand corner can be selected to display all customization options.

## 2 The "General" menu



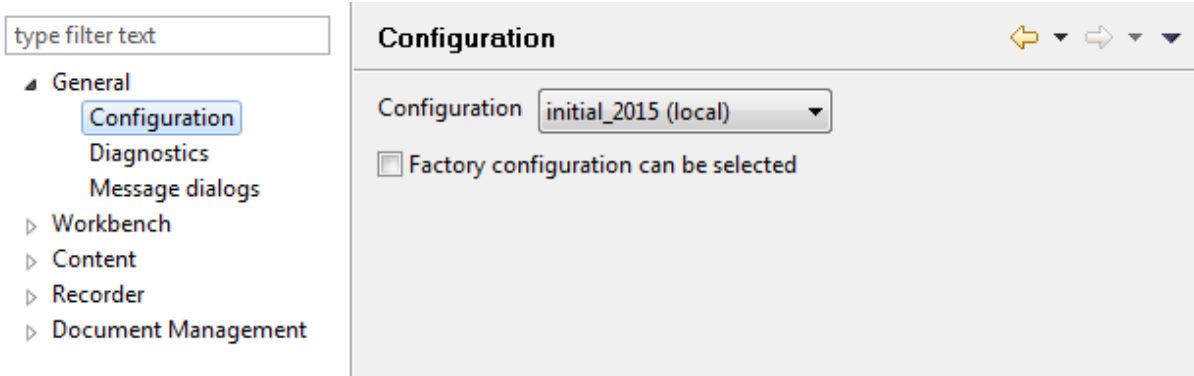
The **General** menu is where you can specify basic program settings.

The first entry on this configuration page allows you to view the **Profile folder path** (in which all Producer documents, settings and configurations are stored). To select a different folder for the profile, simply enter the new path into the input field or click the **Browse** button and navigate to the desired folder.

If **changes are made to the profile folder**, all data are copied from the old profile folder to the new one. tts performance suite is then restarted.

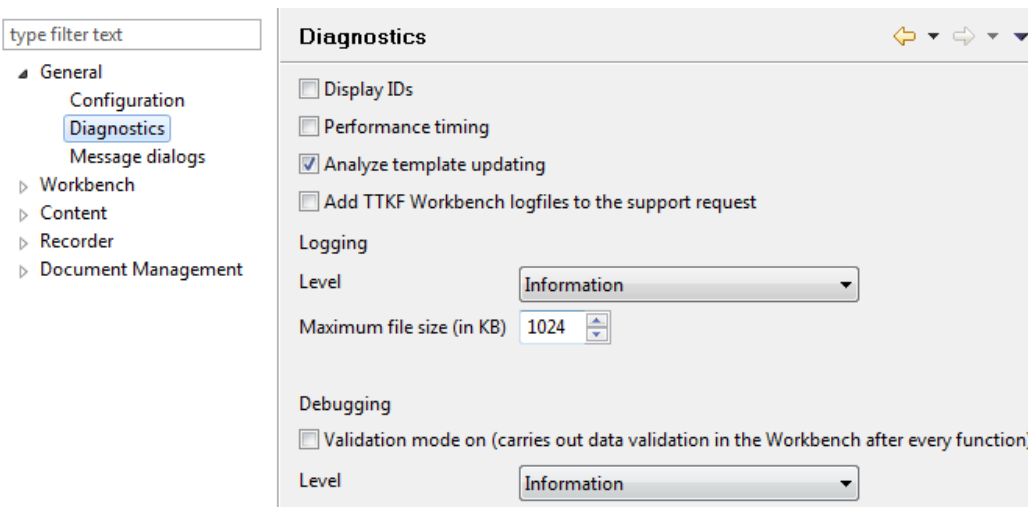
The profile folder can only be created in a completely empty folder (without files, without subfolders).

## 2.1 Configuration



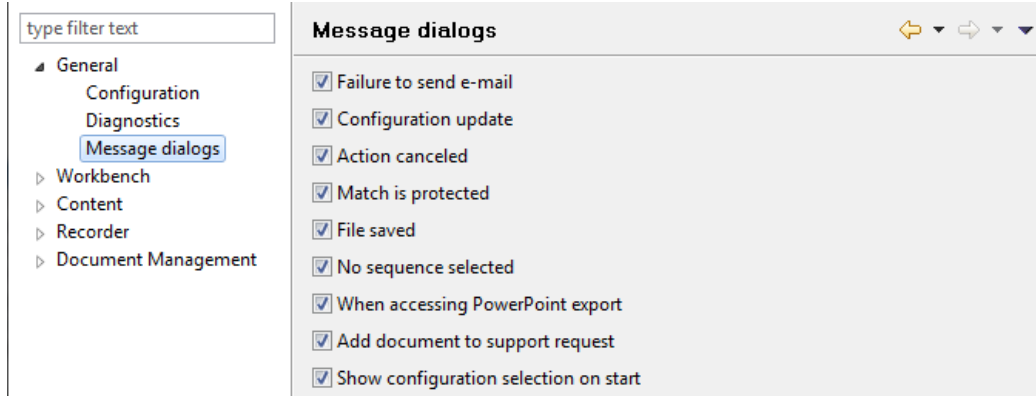
The **Configuration** menu can be used to define customer-specific settings. Here the user can switch between different configurations – assuming they exist.

## 2.2 Diagnostics



The **Diagnostics** menu includes all settings of relevance to tracking any problems that may arise with the software. All the settings you see here are important for helping TTS Support to analyze and repair any problems that occur. Please always consult TTS Support before making any changes to the diagnostic settings. Should you already have made changes, you can return to the default settings at any time via the **Restore Defaults** button.

## 2.3 Message dialogs



The **Message dialogs** menu is for specifying the form in which the software is to issue messages. The checkboxes are for defining whether the respective messages are to be displayed or not. This is also the place where you can reactivate those messages that you have previously suppressed by selecting the "Don't display this message again" option when the message originally appeared.