

High-DPI compatibility as of Release 2021r2

Starting with Release 2021r2, the depiction of tts performance suite was optimized to ensure that it displays better on screens that have not been set to a scaling value of 100%. This document contains further information on these changes and their implications.

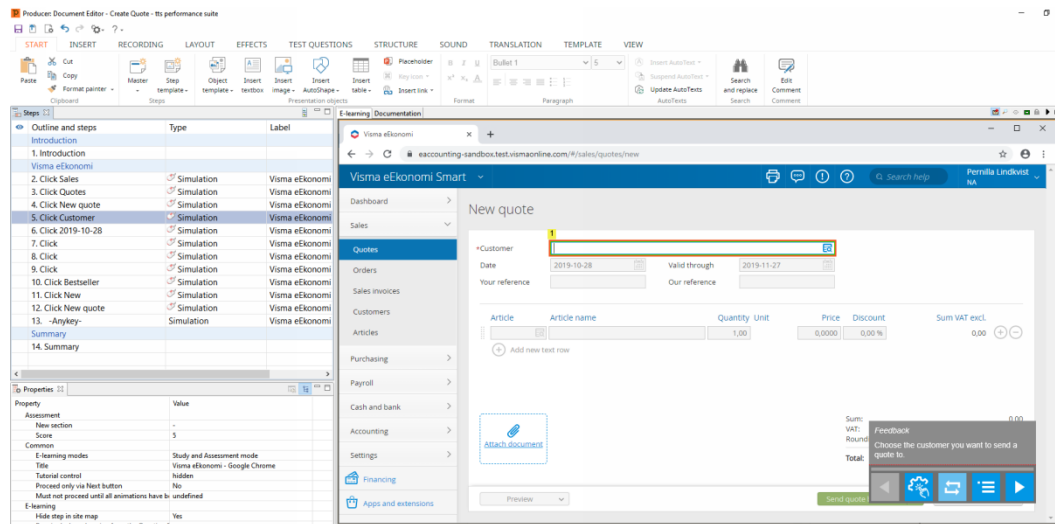
Up to and including Release 2021 of tts performance suite, users were advised to use the software exclusively with a screen scaling of precisely 100%. If set to different values, the user interface of the software could be displayed incorrectly/incompletely under certain circumstances.

Now that Release 2021r2 has arrived, tts performance suite can also be displayed correctly with a different display zoom, e.g. 150%.

Instructions on how to set the display zoom to precisely 100% are still available in the help document titled:

"Elements on screen are too big/small. How can I work with Windows scaling?"

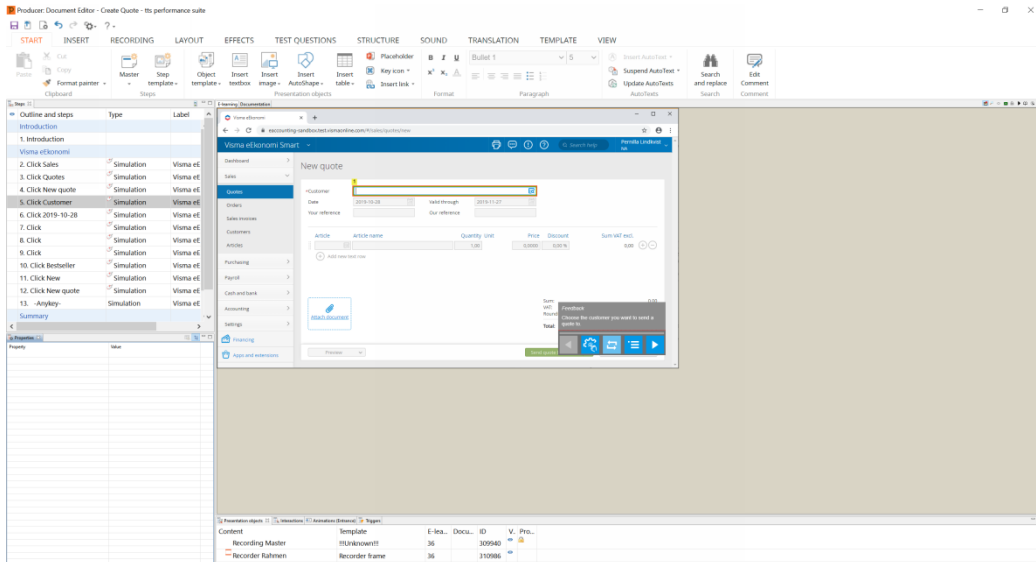
1 Interface set to 100% zoom



In the first example, the display's native resolution is not being fully utilized. It could depict 2880x1620 pixels, but has been intentionally reduced to 1920x1080 pixels. The disadvantage of this would be that the entire display is blurred due to the reduced resolution.

You could also use the full resolution of 100% scaling, but then all screen elements would be displayed in miniature form.

2 Interface set to 150% zoom



If, on the other hand, the full native resolution is selected at 150% display zoom, buttons, lists and all other elements of the interface are displayed large enough for all to see. However, please note that the workspace (stage) in the e-learning is not displayed enlarged to 150%, but continues to be displayed at 100% to ensure a 1:1 depiction. This makes the stage appear considerably smaller.

- 💡 To ensure that you are able to accurately work with the smaller stage, you should use the **screen magnifier** function in an e-learning whenever necessary:

